

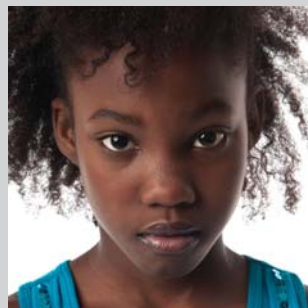
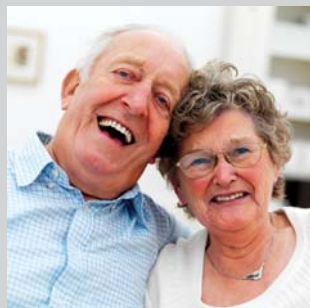
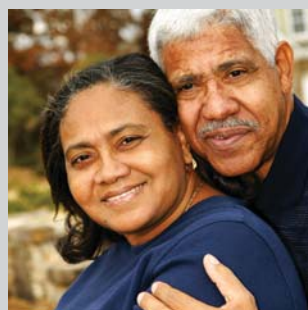
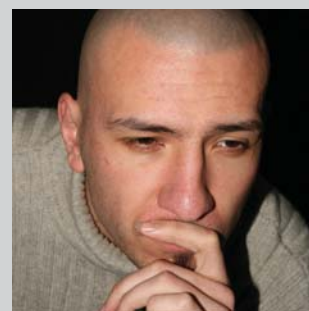
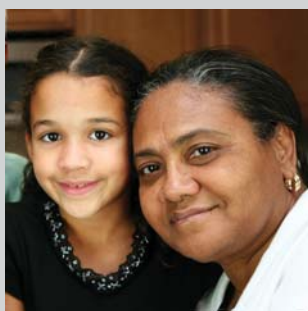
13th International Conference of the
International Network for
Philosophy and Psychiatry (INPP)

www.inpponline.org

Real People:

The Self in Mental Health and Social Care
28th to 30th June 2010, Manchester, United Kingdom
Organised by the University of Central Lancashire and ENUSP

**Call for
Abstracts**



International School for Communities, Rights and Inclusion



International School for Communities, Rights and Inclusion

13th International Conference of the International Network for Philosophy and Psychiatry (INPP)

www.inpponline.org



Real People: The Self in Mental Health and Social Care

28th to 30th June 2010, Manchester, United Kingdom
Organised by the University of Central Lancashire and ENUSP



Call for Abstracts

The 13th International Conference of INPP will offer opportunities for dialogue between and amongst mental health professionals and mental health service users and survivors.

Abstracts are invited on any subject that addresses the core theme of the conference – the self in mental health and social care. This has been chosen to encourage philosophical reflection as well as practical considerations at the interface of philosophy and mental health disciplines. The conference will cover many of the subjects within the broad heading of philosophical, cultural, social, legal and ethical implications of mental health care, pharmacology and neuroscience, and will tackle the interface between generalised scientific method and responses to individual need.

Key sub-plenary and sessional topics will include, but are not limited to:

- Mind and meaning - self, identity and recognition in mental health care.
- Definition, language and the philosophical dimensions of the service user/survivor movement.
- Understanding psychopathology: philosophical and clinical considerations.
- Phenomenological approaches to understanding mental distress.
- Conceptual discussions of mental health, wellbeing, social capital and community capacity.
- Social justice and mental health – communities, rights and inclusion.
- Involving service users and survivors meaningfully in the management and direction of research, care and support.
- Service user and survivor driven innovation in mental health and social care.

- Recovery and personal objectives – concepts of 'personalisation'.
- Reclaiming the self after mental health interventions.
- Spirituality and mental health.
- Alternative realities through music, art, theatre, and literature.
- Personal and community capacity, social and cultural capital.
- Culturally relevant assessment and diagnosis reflecting diversity and difference.
- Scientific psychiatry, classification and the individual.

If you are unsure whether your topic falls within the scope of the conference please contact the organisers. Further information and an abstract form are available on the conference website at

www.uclan.ac.uk/inpp2010

Please e-mail any questions and completed abstract forms to inpp2010@uclan.ac.uk

Conference Office

University of Central Lancashire
INPP Conference Organiser
Preston, PR1 2HE
Tel: 01772 893809
Email: inpp2010@uclan.ac.uk
Website: www.uclan.ac.uk/inpp2010
General Enquiries: 01772 892780
Google: iscri